

Actions of the General Directorate of Environment

NOVAGRIMED Project

Murcia, July 8-9th 2011



PROGRESS UNTIL 2011

	2010	2011	2012	2013
TECHNICAL ISSUES				
1. Studies about the usable forestry biomass volume (3)				
2. Northwest Murcia Forest Fire Prevention Plan				
LEGAL ISSUES				
3. Progress in biomass harvesting and energetic crops				
4. Grants to forestry owners inside the Rural Development Plan				
TECHNICAL ISSUES				
5. Management of 6,000 hectares (PROFORBIOMED Project)				
6. Setting up of a traceability system (PROFORBIOMED Project)				

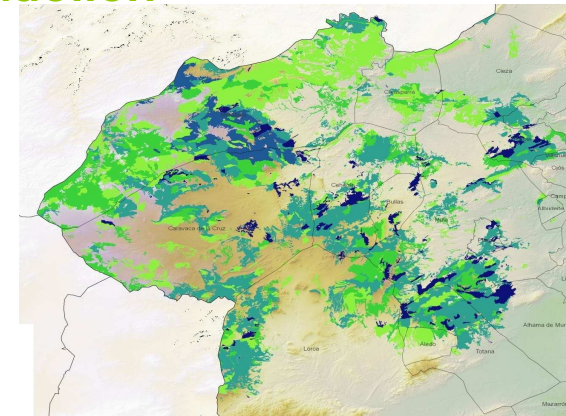
PROGRESS UNTIL 2011: Technical issues

1. Estimate of sustainable forestry biomass production

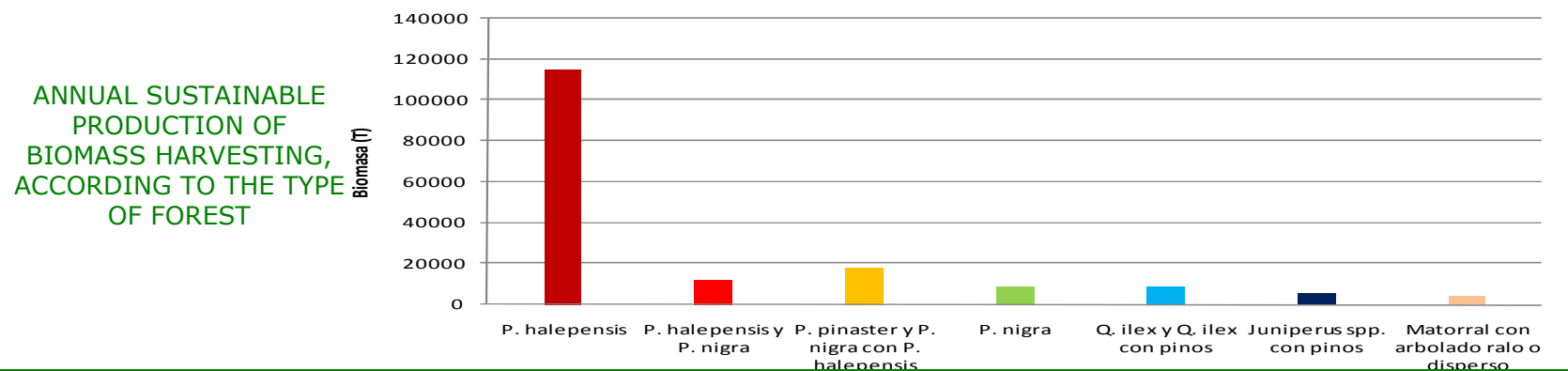
Main target: sustainability of forestry biomass production

Related to this, it could be harvested, as a maximum, the **annual growth of the forest**, in the way the current global biomass won't be reduced.

The expected sustainable production of biomass in the study areas is about **172,366 annual Tons**, considering public and private owners.



DISTRIBUTION PER HECTARE OF THE SUITABLE HARVESTING VOLUME



PROGRESS UNTIL 2011: Technical issues

1. Estimate of sustainable forestry biomass production

Nowadays, the **percentage of harvesting** in Murcia Region is set in the **2% of the annual growth**.

Harvesting data percentage in another Spanish Regions are:

Comunidad Valenciana	8%
Andalucía	26,5%
Cataluña	19%
Castilla y León	20,1%
La Rioja	9,8%
Aragón	6,8%
Galicia	78,4%

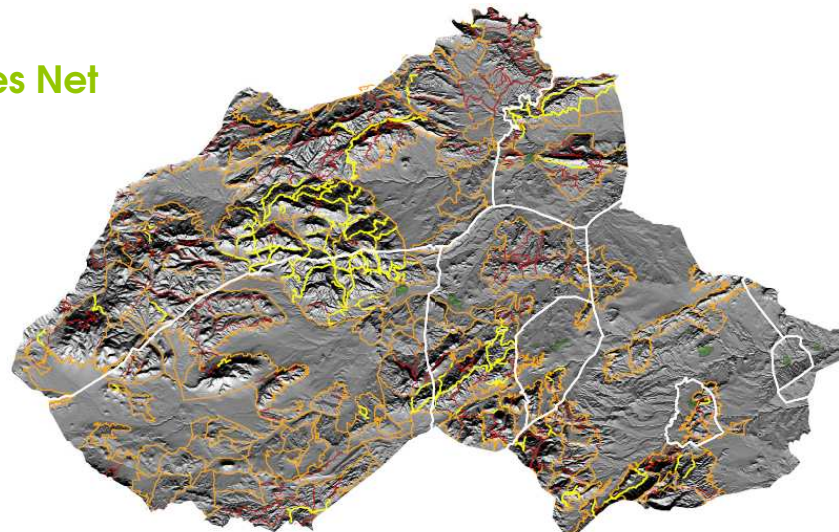
It's considered that could be reached a harvesting rate of 30-35 % of the annual growth, wich would mean a harvesting of 50,000-60,000 biomass Tons.

Considering the *Pinus halepensis* PCI (Kcal/Kg), with 60,000 Tons it could be reached an energy production of 8 MW (ARGEM Data).

PROGRESS UNTIL 2011: Technical issues

2. Northwest Murcia Forest Fire Prevention Plan

Fire Preventive Lines Net



~ LPD PROPUESTAS PARA EJECUCIÓN
 ~ LPD EJECUTADAS
 ~ OTROS ELEMENTOS DE RUPTURA

COMARCA FORESTAL	Nº DE ELEMENTOS (Ud)			LONGITUD (m)			SUPERFICIE (ha)			PORCENTAJE DE EJECUCIÓN EN SUPERFICIE (%)
	Ejecutados	Por Ejecutar	Total	Ejecutados	Por Ejecutar	Total	Ejecutados	Por Ejecutar	Total	
CALASPARRA	7	33	40	44.325	53.915	98.240	243,79	296,53	540,32	45%
CARAVACA	30	34	64	100.085	119.825	219.910	550,47	650,85	1.201,32	46%
CEHEGÍN	16	38	54	45.565	91.180	136.745	250,61	501,49	752,10	33%
MORATALLA	36	89	125	156.760	271.920	428.680	862,18	1.495,56	2.357,74	37%
MULA	16	42	58	33.135	60.335	93.470	182,24	331,85	514,09	35%
TOTAL	105	236	341	379.870	597.175	977.045	2.089,29	3.276,28	5.365,57	39%

PROGRESS UNTIL 2011

	2010	2011	2012	2013
TECHNICAL ISSUES				
1. Studies about the usable forestry biomass volume (3)				
2. Northwest Murcia Forest Fire Prevention Plan				
LEGAL ISSUES				
3. Progress in biomass harvesting and energetic crops				
4. Grants to forestry owners inside the Rural Development Plan				
TECHNICAL ISSUES				
5. Management of 6,000 hectares (PROFORBIOMED Project)				
6. Setting up of a traceability system (PROFORBIOMED Project)				

PROGRESS UNTIL 2011: Legal issues

3. General Directorate Natural Heritage Resolution to approve the Instruction about the interpretation of the General Rules for the study and drafting the **Technical Plans for Sustainable forestry Management Plans in the area of the Murcia Region.**

- Waste forestry biomass
- Profitable areas for forestry biomass harvesting have a **canopy cover higher than 65%**, and are located in areas with **moderate slope (less than 35%)**.
- Energetic forestry crops (unsuitable word)
- The main harvesting of a plot is consider as energetic forestry biomass when **the totally of its timber and waste** are destined to energy generation during **15 consecutive years**.
- Technical documents needed to declare Energetic Crops (PORF, Management Plans, etc.)
- Energetic forestry crops Register
- Issuing of an Energetic Forestry Crops Certificate

Biomass types according to Royal Decree 661/2007

Energetic Crops

b.6.1 **155 €/MWh**



Forestry biomass

b.6.3 **125 €/MWh**



Agricultural waste

b.6.2 **114 €/MWh**



Forestry Industry waste

b.8.2. **69 €/MWh**

PROGRESS UNTIL 2011: Legal issues

4. Order about Grants to forestry owners inside the Rural Development Plan

■ 226 Measure of the Rural Development Plan (FEADER)
Grants for forestry works directed to forest fires prevention

■ 227 Measure of the Rural Development Plan (FEADER)
For Natura 2000 Sites

FUTURE CHALLENGES (2012-2013):

TECHNICAL ISSUES

1. Studies about the usable forestry biomass volume (3)
2. Plan Prevención Incendios Noroeste

1. Studies about the usable forestry biomass volume (3)
2. Plan Prevención Incendios Noroeste

LEGAL ISSUES

3. Progress in biomass harvesting and energetic crops
4. Grants to forestry owners inside the Rural Development Plan

3. Progress in biomass harvesting and energetic crops
4. Grants to forestry owners inside the Rural Development Plan

TECHNICAL ISSUES

5. Management of 6,000 hectares (PROFORBIOMED Project)
6. Setting up of a traceability system (PROFORBIOMED Project)

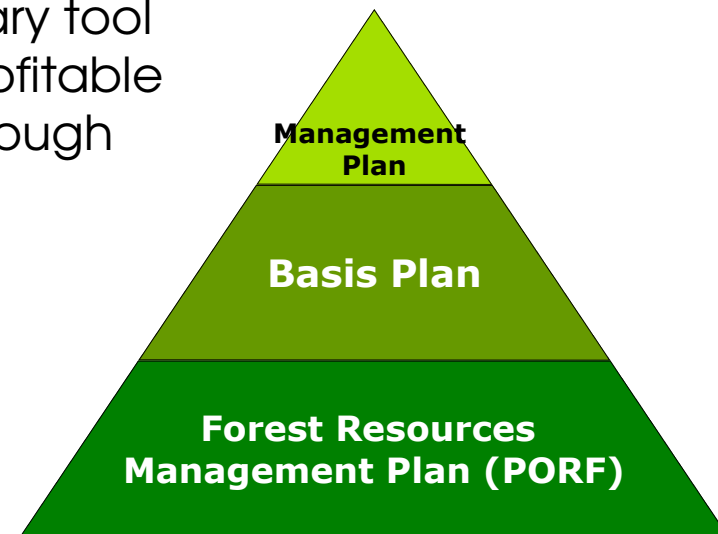
5. Management of 6,000 hectares (PROFORBIOMED Project)
6. Setting up of a traceability system (PROFORBIOMED Project)

[illegible]

FUTURE CHALLENGES: Technical issues

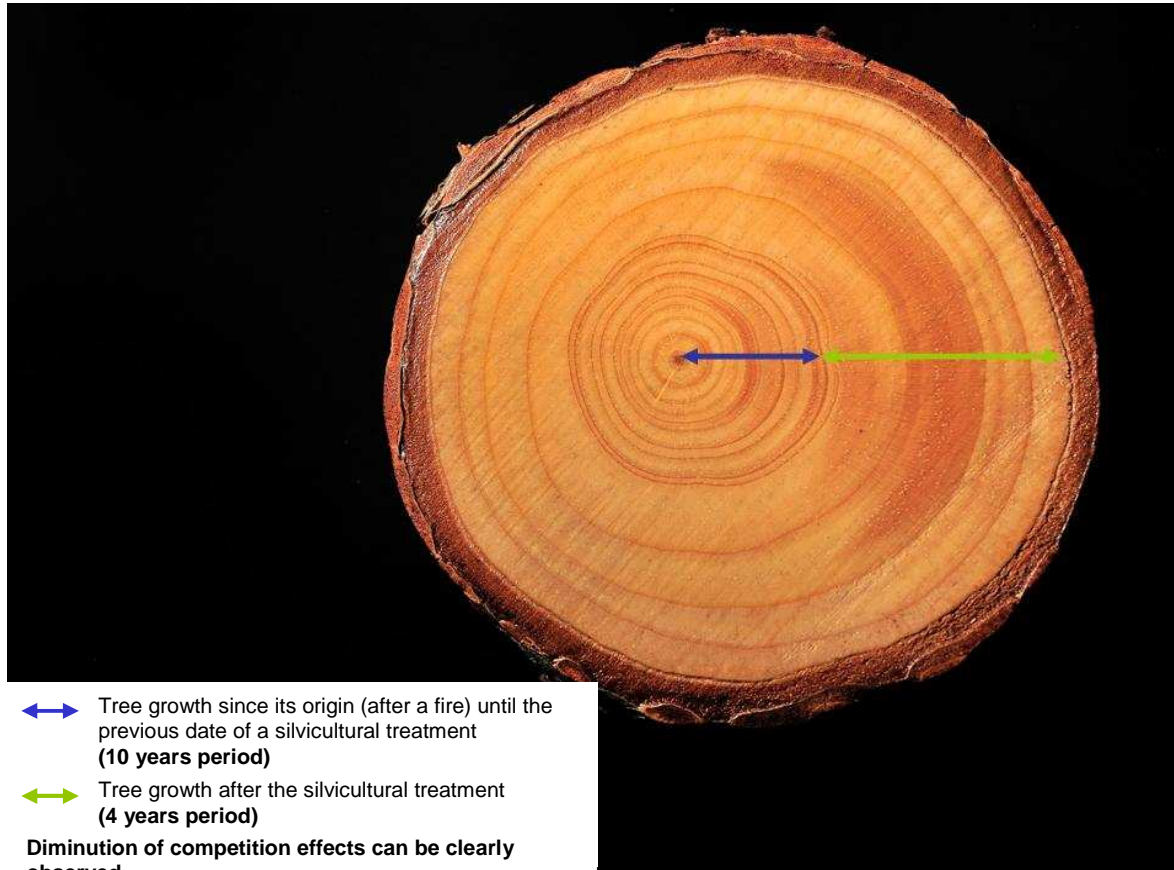
5. Forest Management in order to declare energetic crops

- **Traceability:** ability to verify the history, location, or application of an item by means of documented recorded identification)
- **Management Plans:** highly necessary tool to guarantee a sustainable and profitable way of manage forest resources, trough conservation of natural heritage.



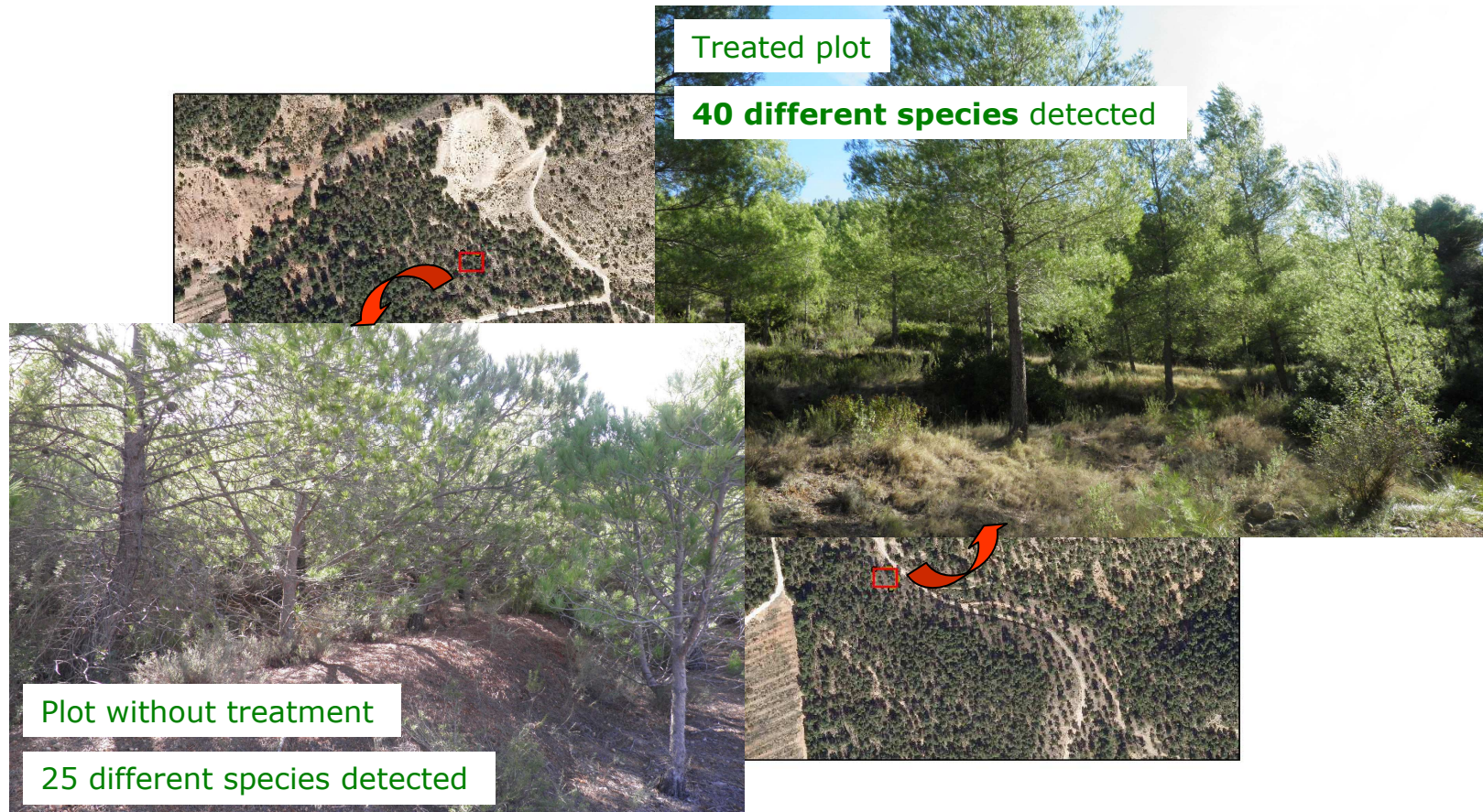
FORESTRY MYTHS AND LEGENDS

1. Sparse biomass production of Murcia forests?



FORESTRY MYTHS AND LEGENDS

2. Damages caused by silvicultural treatments?



Actions of the General Directorate of Environment

NOVAGRIMED Project

Murcia, July 8-9th 2011

